

## BID NOTICE

The Morrison City Council is seeking sealed bids for a ROOF REPLACEMENT of the Odell Public Library/City of Morrison Community Room building located at 307 South Madison, Morrison, IL 61270.

Bid packets may be picked up at Odell Public Library. Packets may also be downloaded from [odellpubliclibrary.com](http://odellpubliclibrary.com). Please see the website for open hours of business.

Bids must be signed and enclosed in a sealed envelope marked SEALED BID-ROOF, mailed or delivered Attn: Meridith Layne to Odell Public Library. Bids are due **September 22<sup>nd</sup>, 2021 no later than 10am**. At such time bids will be publicly opened and read aloud. Anything received after the deadline will be returned unopened.

Contractors bidding must have a minimum of 10 years of experience in roofing projects and provide a Statement of Qualifications, including examples of successfully completed projects of comparable size, scope and complexity.

Contractors' bidding must provide a certificate of insurance naming the City of Morrison as an Additional Insured with general liability coverage no less than \$1 million/\$2 million (that is, \$1,000,000 each occurrence and \$2,000,000 aggregate). Products and completed operations in an amount not less than \$2 million aggregate. Workers' compensation as statutorily required by the IL Workers' Compensation Act. Employers' liability in an amount not less than \$1 million. Auto liability in an amount not less than \$1 million combined single limit. Builders' risk equal to 100% of the completed value of the work being done.

Contractors' bid documents shall include a Performance Bond adequate to cover the work.

This contract is subject to the Illinois Prevailing Wage Act (820 ILCS 130/1 et seq.).

The Morrison City Council reserves the right to accept or reject any or all bids or parts thereof, or waive any irregularities or technicalities in any bid. The Morrison City Council reserves the right to award based upon the Base Bid or some options or any combination therein. The City will consider the project timeline and bidder shall indicate ability to potentially do the job in 2021.

There will be no pre-bid meeting.

Any questions should be directed to Odell Public Library Director Meridith Layne at 815-772-7323 or [odell.library@gmail.com](mailto:odell.library@gmail.com)

# Whiteside County Prevailing Wage Rates posted on 8/16/2021

Trade Title	Rg	Type	C	Base	Foreman	Overtime				H/W	Pension	Vac	Trng	Other Ins
						M-F	Sa	Su	Hol					
ASBESTOS ABT-GEN	All	BLD		44.53	45.53	1.5	1.5	2.0	2.0	9.35	22.20	0.00	0.80	
ASBESTOS ABT-MEC	All	BLD		26.10	27.10	1.5	1.5	2.0	2.0	9.70	6.25	0.00	0.50	
BOILERMAKER	All	BLD		41.00	44.00	1.5	1.5	2.0	2.0	7.07	21.86	0.00	1.45	
BRICK MASON	All	BLD		43.40	46.15	1.5	1.5	2.0	2.0	12.85	16.70	0.00	0.99	
CARPENTER	All	BLD		38.28	42.49	1.5	1.5	2.0	2.0	11.79	20.30	0.00	0.74	
CARPENTER	All	HWY		44.81	46.56	1.5	1.5	2.0	2.0	11.79	20.30	0.00	0.74	
CEMENT MASON	All	ALL		36.55	39.30	1.5	1.5	2.0	2.0	11.35	23.41	0.00	0.55	
CERAMIC TILE FINISHER	All	BLD		36.80		1.5	1.5	2.0	2.0	11.10	10.54	0.00	0.85	
COMMUNICATION TECHNICIAN	E	BLD		42.05	46.26	1.5	1.5	2.0	2.0	15.54	16.72	0.00	0.84	
ELECTRIC PWR EQMT OP	All	ALL		46.06	62.84	1.5	1.5	2.0	2.0	6.75	12.90	0.00	1.15	1.38
ELECTRIC PWR GRNDMAN	All	ALL		35.38	62.84	1.5	1.5	2.0	2.0	6.75	9.91	0.00	0.88	1.06
ELECTRIC PWR GRNDMAN	All	HWY		33.69	59.52	1.5	1.5	2.0	2.0	6.00	10.44	0.00	0.59	1.01
ELECTRIC PWR LINEMAN	All	ALL		55.37	62.84	1.5	1.5	2.0	2.0	6.75	15.50	0.00	1.38	1.66
ELECTRIC PWR LINEMAN	E	HWY		52.44	59.52	1.5	1.5	2.0	2.0	6.00	16.27	0.00	0.93	1.58
ELECTRIC PWR TRK DRV	All	ALL		36.67	62.84	1.5	1.5	2.0	2.0	6.75	10.27	0.00	0.92	1.10
ELECTRIC PWR TRK DRV	E	HWY		34.90	59.52	1.5	1.5	2.0	2.0	6.00	10.83	0.00	0.62	1.05
ELECTRICIAN	E	BLD		50.00	55.00	1.5	1.5	2.0	2.0	15.54	21.88	0.00	1.00	
ELECTRICIAN	W	BLD		37.25	39.25	1.5	1.5	2.0	2.0	9.24	14.92	0.00	0.43	
ELECTRONIC SYSTEM TECH	W	BLD		26.50	28.25	1.5	1.5	2.0	2.0	8.10	7.89	0.00	0.31	
ELEVATOR CONSTRUCTOR	All	BLD		47.85	53.83	2.0	2.0	2.0	2.0	15.87	19.31	3.83	0.64	
GLAZIER	All	BLD		28.12	30.37	1.5	1.5	2.0	2.0	6.94	11.22	0.00	0.95	
HEAT/FROST INSULATOR	All	BLD		30.86	34.16	1.5	1.5	2.0	2.0	7.90	13.85	0.00	1.25	
IRON WORKER	E	ALL		41.37	46.33	2.0	2.0	2.0	2.0	12.66	29.95	0.00	1.80	
IRON WORKER	W	ALL		33.00	35.64	1.5	1.5	2.0	2.0	11.94	14.95	0.00	0.72	
LABORER	All	BLD		35.83	36.83	1.5	1.5	2.0	2.0	9.35	22.20	0.00	0.80	
LABORER	All	HWY		41.38	42.13	1.5	1.5	2.0	2.0	9.35	22.20	0.00	0.80	
LABORER, SKILLED	All	HWY		44.53	45.28	1.5	1.5	2.0	2.0	9.35	22.20	0.00	0.80	
LATHER	All	BLD		38.28	42.49	1.5	1.5	2.0	2.0	11.79	20.30	0.00	0.74	
MACHINIST	All	BLD		50.68	53.18	1.5	1.5	2.0	2.0	8.93	8.95	1.85	1.47	
MARBLE FINISHER	All	BLD		36.80		1.5	1.5	2.0	2.0	11.10	10.54	0.00	0.85	
MARBLE MASON	All	BLD		39.79	42.29	1.5	1.5	2.0	2.0	11.10	12.54	0.00	0.90	

MILLWRIGHT	All	BLD		43.32	47.65	1.5	1.5	2.0	2.0	11.66	17.75	0.00	0.76
OPERATING ENGINEER	E	BLD	1	48.05	52.05	2.0	2.0	2.0	2.0	21.90	17.50	3.00	2.30
OPERATING ENGINEER	E	BLD	2	47.35	52.05	2.0	2.0	2.0	2.0	21.90	17.50	3.00	2.30
OPERATING ENGINEER	E	BLD	3	44.90	52.05	2.0	2.0	2.0	2.0	21.90	17.50	3.00	2.30
OPERATING ENGINEER	E	BLD	4	42.90	52.05	2.0	2.0	2.0	2.0	21.90	17.50	3.00	2.30
OPERATING ENGINEER	E	BLD	5	51.80	52.05	2.0	2.0	2.0	2.0	21.90	17.50	3.00	2.30
OPERATING ENGINEER	E	BLD	6	51.05	52.05	2.0	2.0	2.0	2.0	21.90	17.50	3.00	2.30
OPERATING ENGINEER	E	BLD	7	48.05	52.05	2.0	2.0	2.0	2.0	21.90	17.50	3.00	2.30
OPERATING ENGINEER	E	HWY	1	47.90	51.90	1.5	1.5	2.0	2.0	21.90	17.50	3.00	2.30
OPERATING ENGINEER	E	HWY	2	47.35	51.90	1.5	1.5	2.0	2.0	21.90	17.50	3.00	2.30
OPERATING ENGINEER	E	HWY	3	46.05	51.90	1.5	1.5	2.0	2.0	21.90	17.50	3.00	2.30
OPERATING ENGINEER	E	HWY	4	44.60	51.90	1.5	1.5	2.0	2.0	21.90	17.50	3.00	2.30
OPERATING ENGINEER	E	HWY	5	43.15	51.90	1.5	1.5	2.0	2.0	21.90	17.50	3.00	2.30
OPERATING ENGINEER	E	HWY	6	50.90	51.90	1.5	1.5	2.0	2.0	21.90	17.50	3.00	2.30
OPERATING ENGINEER	E	HWY	7	48.90	51.90	1.5	1.5	2.0	2.0	21.90	17.50	3.00	2.30
OPERATING ENGINEER	W	BLD	1	36.50	39.50	1.5	1.5	2.0	2.0	19.25	12.85	2.00	1.70
OPERATING ENGINEER	W	BLD	2	33.85	39.50	1.5	1.5	2.0	2.0	19.25	12.85	2.00	1.70
OPERATING ENGINEER	W	BLD	3	32.80	39.50	1.5	1.5	2.0	2.0	19.25	12.85	2.00	1.70
OPERATING ENGINEER	W	BLD	4	36.75	39.50	1.5	1.5	2.0	2.0	19.25	12.85	2.00	1.70
OPERATING ENGINEER	W	BLD	5	37.25	39.50	1.5	1.5	2.0	2.0	19.25	12.85	2.00	1.70
OPERATING ENGINEER	W	BLD	6	37.75	39.50	1.5	1.5	2.0	2.0	19.25	12.85	2.00	1.70
OPERATING ENGINEER	W	BLD	7	37.50	39.50	1.5	1.5	2.0	2.0	19.25	12.85	2.00	1.70
OPERATING ENGINEER	W	HWY	1	36.50	39.50	1.5	1.5	2.0	2.0	19.25	12.85	2.00	1.70
OPERATING ENGINEER	W	HWY	2	33.85	39.50	1.5	1.5	2.0	2.0	19.25	12.85	2.00	1.70
OPERATING ENGINEER	W	HWY	3	32.80	39.50	1.5	1.5	2.0	2.0	19.25	12.85	2.00	1.70
OPERATING ENGINEER	W	HWY	4	36.75	39.50	1.5	1.5	2.0	2.0	19.25	12.85	2.00	1.70
OPERATING ENGINEER	W	HWY	5	37.25	39.50	1.5	1.5	2.0	2.0	19.25	12.85	2.00	1.70
OPERATING ENGINEER	W	HWY	6	37.75	39.50	1.5	1.5	2.0	2.0	19.25	12.85	2.00	1.70
OPERATING ENGINEER	W	HWY	7	37.00	39.50	1.5	1.5	2.0	2.0	19.25	12.85	2.00	1.70
OPERATING ENGINEER	W	HWY	8	37.50	39.50	1.5	1.5	2.0	2.0	19.25	12.85	2.00	1.70
PAINTER	All	ALL		29.69	30.94	1.5	1.5	1.5	2.0	6.95	9.33	0.00	0.55
PAINTER OVER 30 FT.	All	ALL		31.69	32.94	1.5	1.5	1.5	2.0	6.95	9.33	0.00	0.55
PAINTER PWR EQMT	All	ALL		30.19	31.44	1.5	1.5	1.5	2.0	6.95	9.33	0.00	0.55
PILEDRIVER	All	BLD		39.28	43.60	1.5	1.5	2.0	2.0	11.79	20.30	0.00	0.74
PILEDRIVER	All	HWY		45.81	47.56	1.5	1.5	2.0	2.0	11.79	20.30	0.00	0.74
PIPEFITTER	All	ALL		41.00	45.10	1.5	1.5	2.0	2.0	7.70	15.35	0.00	1.54

PLASTERER	All	BLD		37.05	40.76	1.5	1.5	2.0	2.0	12.05	20.52	0.00	0.55	
PLUMBER	All	ALL		41.00	45.10	1.5	1.5	2.0	2.0	7.70	15.35	0.00	1.54	
ROOFER	E	BLD		46.70	50.70	1.5	1.5	2.0	2.0	11.23	13.91	0.00	0.91	
ROOFER	W	BLD		31.00	32.25	1.5	1.5	2.0	2.0	10.44	9.02	0.00	1.20	
SHEETMETAL WORKER	All	BLD		45.94	50.35	1.5	1.5	2.0	2.0	8.25	21.46	0.00	0.80	0.92
SPRINKLER FITTER	All	BLD		43.45	46.45	1.5	1.5	2.0	2.0	10.55	14.22	0.00	0.52	
STONE MASON	All	BLD		43.40	46.15	1.5	1.5	2.0	2.0	12.85	16.70	0.00	0.99	
TERRAZZO FINISHER	All	BLD		36.80		1.5	1.5	2.0	2.0	11.10	10.54	0.00	0.85	
TERRAZZO MASON	All	BLD		39.79	42.29	1.5	1.5	2.0	2.0	11.10	12.54	0.00	0.90	
TILE LAYER	All	BLD		38.28	42.49	1.5	1.5	2.0	2.0	11.79	20.30	0.00	0.74	
TILE MASON	All	BLD		39.79	42.29	1.5	1.5	2.0	2.0	11.10	12.54	0.00	0.90	
TRUCK DRIVER	All	ALL	1	39.85	44.21	1.5	1.5	2.0	2.0	14.02	6.89	0.00	0.25	
TRUCK DRIVER	All	ALL	2	40.44	44.21	1.5	1.5	2.0	2.0	14.02	6.89	0.00	0.25	
TRUCK DRIVER	All	ALL	3	40.71	44.21	1.5	1.5	2.0	2.0	14.02	6.89	0.00	0.25	
TRUCK DRIVER	All	ALL	4	41.10	44.21	1.5	1.5	2.0	2.0	14.02	6.89	0.00	0.25	
TRUCK DRIVER	All	ALL	5	42.20	44.21	1.5	1.5	2.0	2.0	14.02	6.89	0.00	0.25	
TRUCK DRIVER	All	O&C	1	31.88	35.37	1.5	1.5	2.0	2.0	14.02	6.89	0.00	0.25	
TRUCK DRIVER	All	O&C	2	32.35	35.37	1.5	1.5	2.0	2.0	14.02	6.89	0.00	0.25	
TRUCK DRIVER	All	O&C	3	32.57	35.37	1.5	1.5	2.0	2.0	14.02	6.89	0.00	0.25	
TRUCK DRIVER	All	O&C	4	32.88	35.37	1.5	1.5	2.0	2.0	14.02	6.89	0.00	0.25	
TRUCK DRIVER	All	O&C	5	33.76	35.37	1.5	1.5	2.0	2.0	14.02	6.89	0.00	0.25	
TUCK POINTER	All	BLD		43.40	46.15	1.5	1.5	2.0	2.0	12.85	16.70	0.00	0.99	

- Legend**
- Rg** Region
  - Type** Trade Type - All,Highway,Building,Floating,Oil & Chip,Rivers
  - C** Class
  - Base** Base Wage Rate
  - OT M-F** Unless otherwise noted, OT pay is required for any hour greater than 8 worked each day, Mon through Fri. The number listed is the multiple of the base wage.
  - OT Sa** Overtime pay required for every hour worked on Saturdays
  - OT Su** Overtime pay required for every hour worked on Sundays
  - OT Hol** Overtime pay required for every hour worked on Holidays
  - H/W** Health/Welfare benefit
  - Vac** Vacation
  - Trng** Training
  - Other Ins** Employer hourly cost for any other type(s) of insurance provided for benefit of worker.

Explanations WHITESIDE COUNTY

ELECTRICIAN AND COMMUNICATION TECHNICIAN(EAST) - Townships of Genessee, Jordan, Hopkins, Sterling, Hume, Montmorency, Tampico, and Hahnaman.

ELECTRONIC SYSTEMS TECHNICIAN (WEST) - Portion west of Genessee, Hume, Mount Pleasant, and Tampico Townships.

IRONWORKERS (EAST) - That part county North and East of a line from Fair Haven (Carroll County) to Rt. 30, then to the East county line.

OPERATING ENGINEERS (WEST) - From the fifth sectional line east of Morrison, running directly north and south.

The following list is considered as those days for which holiday rates of wages for work performed apply: New Years Day, Memorial Day, Fourth of July, Labor Day, Thanksgiving Day, Christmas Day and Veterans Day in some classifications/counties. Generally, any of these holidays which fall on a Sunday is celebrated on the following Monday. This then makes work performed on that Monday payable at the appropriate overtime rate for holiday pay. Common practice in a given local may alter certain days of celebration. If in doubt, please check with IDOL.

Oil and chip resealing (O&C) means the application of road oils and liquid asphalt to coat an existing road surface, followed by application of aggregate chips or gravel to coated surface, and subsequent rolling of material to seal the surface.

#### EXPLANATION OF CLASSES

ASBESTOS - GENERAL - removal of asbestos material/mold and hazardous materials from any place in a building, including mechanical systems where those mechanical systems are to be removed. This includes the removal of asbestos materials/mold and hazardous materials from ductwork or pipes in a building when the building is to be demolished at the time or at some close future date. ASBESTOS - MECHANICAL - removal of asbestos material from mechanical systems, such as pipes, ducts, and boilers, where the mechanical systems are to remain.

#### CERAMIC TILE FINISHER, MARBLE FINISHER, TERRAZZO FINISHER

Assisting, helping or supporting the tile, marble and terrazzo mechanic by performing their historic and traditional work assignments required to complete the proper installation of the work covered by said crafts. The term "Ceramic" is used for naming the classification only and is in no way a limitation of the product handled. Ceramic takes into consideration most hard tiles.

#### COMMUNICATIONS TECHNICIAN - East

Installing, manufacturing, assembling and maintaining sound and intercom, protection alarm (security), fire alarm, master antenna television, closed circuit television, low voltage control for computers and/or door monitoring, school communications systems, telephones and servicing of nurse and emergency calls, and the installation and maintenance of transmit and receive antennas, transmitters, receivers, and associated apparatus which operates in conjunction with above systems. All work associated with these system installations will be included EXCEPT the installation of protective metallic conduit in new construction projects (excluding less than ten-foot runs strictly for protection of cable) and 120 volt AC (or higher) power wiring and associated hardware.

#### ELECTRONIC SYSTEMS TECHNICIAN - West

Installing, assembling and maintaining sound and intercom, protection alarm (security), master antenna television, closed circuit television, computer hardware and software programming and installation to the network's outlet and input (EXCLUDING all cabling, power and cable termination work historically performed by wiremen), door monitoring and control, nurse and emergency call programming and installation to the system's outlet and input (EXCLUDING all cabling, power and cable termination work historically performed by wiremen), clock and timing; and the installation and maintenance of transmit and

receive antennas, transmitters, receivers, and associated apparatus which operates in conjunction with the above systems. All work associated with these system installations will be included EXCEPT (1) installation of protective metallic conduit, excluding less than ten-foot runs strictly for protection of cable, and (2) 120 volt AC (or higher) power wiring and associated hardware.

#### LABORER, SKILLED - HIGHWAY

Individuals engaged in the following types of work, irrespective of the site of the work: asbestos abatement worker, handling of any materials with any foreign matter harmful to skin or clothing, track laborer, cement handlers, chloride handlers, the unloading and loading with steel workers and re-bars, concrete workers wet, tunnel helpers in free air, batch dumpers, mason tenders, kettle and tar men, tank cleaners, plastic installers, scaffold workers, motorized buggies or motorized unit used for wet concrete or handling of building materials, laborers with de-watering systems, sewer workers plus depth, rod and chainmen with technical engineers, rod and chainmen with land surveyors, rod and chainmen with surveyors, vibrator operators, cement silica, clay, fly ash, lime and plasters, handlers (bulk or bag), cofferdam workers plus depth, on concrete paving, placing, cutting and tying of reinforcing, deck hand, dredge hand, and shore laborers, bankmen on floating plant, grade checker, power tools, front end man on chip spreaders, cession workers plus depth, gunnite nozzle men, lead man on sewer work, welders, cutters, burners and torchmen, chainsaw operators, jackhammer and drill operators, layout man and/or drainage tile layer, steel form setter - street and highway, air tamping hammermen, signal man on crane, concrete saw operator, screedman on asphalt pavers, laborers tending masons with hot material or where foreign materials are used, mortar mixer operators, multiple concrete duct - leadsman, lumen, asphalt raker, curb asphalt machine operator, ready mix scalemen (permanent, portable or temporary plant), laborers handling masterplate or similar materials, laser beam operator, concrete burning machine operator, coring machine operator, plaster tender, underpinning and shoring of buildings, pump men, manhole and catch basin, dirt and stone tamper, hose men on concrete pumps, hazardous waste worker, lead base paint abatement worker, lining of pipe, refusing machine, assisting on direct boring machine, the work of laying watermain, fire hydrants, all mechanical joints to watermain work, sewer worker, and tapping water service and forced lift station mechanical worker.

MATERIAL TESTER/INSPECTOR I: Hand coring and drilling for testing of materials; field inspection of uncured concrete and asphalt.

MATERIAL TESTER/INSPECTOR II: Field inspection of welds, structural steel, fireproofing, masonry, soil, facade, reinforcing steel, formwork, cured concrete, and concrete and asphalt batch plants; adjusting proportions of bituminous mixtures.

#### OPERATING ENGINEERS - BUILDING (East)

Class 1. Asphalt Plant; Asphalt Spreader; Autograde; Backhoes with Caisson Attachment; Batch Plant; Benoto (requires Two Engineers); Boiler and Throttle Valve; Caisson Rigs; Central Redi-Mix Plant; Combination Back Hoe Front End-loader Machine; Compressor and Throttle Valve; Concrete Breaker (Truck Mounted); Concrete Conveyor; Concrete Paver (over 27E cu. ft.); Concrete Paver (27 cu. ft. and under); Concrete Placer; Concrete Pump (Truck Mounted); Concrete Conveyor (Truck Mounted); Concrete Tower; Cranes, All; GCI and similar types (required two operators only); Cranes, Hammerhead; Creter Crane; Crusher, Stone, etc.; Derricks, All; Derricks, Traveling; Formless Curb and Gutter Machine; Grader, Elevating; Grouting Machines; Highlift Shovels or Front Endloader 2-1/4 yd. and over; Hoists, Elevators, outside type rack and pinion and similar machines; Hoists, one, two and three Drum; Hoists, Two Tugger One Floor; Hydraulic Backhoes; Hydraulic Boom Trucks; Hydro Vac (and similar equipment - excluding hose work and any sewer work); Locomotives, All; Lubrication Technician; Manipulators; Motor Patrol; Pile Drivers and Skid Rig; Post Hole Digger; Pre-Stress Machine; Pump Cretes Dual Ram; Pump Cretes: Squeeze Cretes - Screw Type Pumps, Gypsum Bulker and Pump; Raised and Blind Hole Drill; Rock Drill (self-propelled); Rock Drill - Truck Mounted; Roto Mill Grinder; Scoops - Tractor Drawn; Slipform Paver; Scrapers Prime Movers; Straddle Buggies; Tie Back Machine; Tractor with Boom and Side Boom; Trenching Machines.

Class 2. Bobcat (over 3/4 cu. yd.); Boilers; Brick Forklift; Broom, All Power Propelled; Bulldozers; Concrete Mixer (Two Bag and Over); Conveyor, Portable; Forklift Trucks; Highlift Shovels or Front Endloaders under 2-1/4 yd.; Hoists, Automatic; Hoists, Sewer Dragging Machine; Hoists, Tugger Single Drum; Laser Screed; Rollers, All; Steam Generators; Tractors, All; Tractor Drawn Vibratory

Roller; Winch Trucks with "A" Frame.

Class 3. Air Compressor; Asphalt Spreader; Combination - Small Equipment Operator; Generators; Heaters, Mechanical; Hoists, Inside Elevators - (Rheostat Manual Controlled); Hydraulic Power Units (Pile Driving, Extracting, or Drilling - with a seat); Lowboys; Pumps, Over 3" (1 to 3 not to exceed total of 300 ft.); Pumps, Well Points; Welding Machines (2 through 5); Winches, 4 Small Electric Drill Winches; Bobcat (up to and including 3/4 cu. yd.).

Class 4. Elevator push button with automatic doors; Hoists, Inside; Oilers; Brick Forklift.

Class 5. Assistant Craft Foreman

Class 6. Mechanics; Welders.

Class 7. Gradall

#### OPERATING ENGINEERS - HIGHWAY CONSTRUCTION (East)

Class 1. Asphalt Plant; Asphalt Heater and Planer Combination; Asphalt Heater Scarfire; Asphalt Silo Tender; Asphalt Spreader; Autograder; ABG Paver; Backhoes with Caisson Attachment; Ballast Regulator; Belt Loader; Caisson Rigs; Car Dumper; Central Redi-Mix Plant; Backhoe w/shear attachments; Combination Backhoe Front Endloader Machine, (1 cu. yd. Backhoe Bucket or over or with attachments); Concrete Breaker (Truck Mounted); Concrete Conveyor; Concrete Paver over 27E cu. ft.; Concrete Placer; Concrete Tube Float; Cranes, all attachments; Cranes, Tower of all types; Creter Crane; Crusher, Stone, etc.; Derricks, All; Derrick Boats; Derricks, Traveling; Directional Boring Machine over 12"; Dredges; Formless Curb and Gutter Machine; Grader, Elevating; Grader, Motor Grader, Motor Patrol, Auto Patrol, Form Grader, Pull Grader, Subgrader; Guard Rail Post Driver Mounted; Hoists, One, Two and Three Drum; Hydraulic Backhoes; Hydro Vac, Self Propelled, Truck Mounted (excluding hose work and any sewer work); Lubrication Technician; Manipulators; Pile Drivers and Skid Rig; Pre-Stress Machine; Pump Cretes Dual Ram; Rock Drill - Crawler or Skid Rig; Rock Drill - Truck Mounted; Rock/Track Tamper; Roto Mill Grinder; Slip-Form Paver; Snow Melters; Soil Test Drill Rig (Truck Mounted); Straddle Buggies; GCI Crane; Hydraulic Telescoping Form (Tunnel); Tie Back Machine; Tractor Drawn Belt Loader; Tractor Drawn Belt Loader with attached pusher; Tractor with Boom; Tractaire with Attachments; Traffic Barrier Conveyor Machine; Raised or Blind Hole Drills; Trenching Machine (over 12"); Truck Mounted Concrete Pump with Boom; Truck Mounted Concrete Conveyor; Work Boat (no license required - 90 h.p. or above); Underground Boring and/or Mining Machines; Wheel Excavator; Widener (APSCO).

Class 2. Batch Plant; Bituminous Mixer; Boiler and Throttle Valve; Bulldozers; Car Loader Trailing Conveyors; Combination Backhoe Front Endloader Machine (less than 1 cu. yd. Backhoe Bucket or over or with attachments); Compressor and Throttle Valve; Compressor, Common Receiver (3); Concrete Breaker or Hydro Hammer; Concrete Grinding Machine; Concrete Mixer or Paver 7S Series to and including 27 cu. ft.; Concrete Spreader; Concrete Curing Machine, Burlap Machine, Belting Machine and Sealing Machine; Concrete Wheel Saw (large self-propelled - excluding walk-behinds and hand-held); Conveyor Muck Cars (Haglund or Similar Type); Drills, all; Finishing Machine - Concrete; Highlift Shovels or Front Endloader; Hoist - Sewer Dragging Machine; Hydraulic Boom Trucks (All Attachments); Hydro Blaster; All Locomotives, Dinky; Off-Road Hauling Units; Non-Self Loading Dump; Ejection Dump; Pump Cretes: Squeeze Cretes - Screw Type Pumps, Gypsum Bulker and Pump; Roller, Asphalt; Rotary Snow Plows; Rototiller, Seaman, etc., self-propelled; Scoops - Tractor Drawn; Self-Propelled Compactor; Spreader - Chip - Stone, etc.; Scraper; Scraper - Prime Mover in Tandem (Regardless of Size); Tank Car Heater; Tractors, Push, Pulling Sheeps Foot, Disc, Compactor, etc.; Tug Boats.

Class 3. Boilers; Brooms, All Power Propelled; Cement Supply Tender; Compressor, Common Receiver (2); Concrete Mixer (Two Bag and Over); Conveyor, Portable; Farm-Type Tractors Used for Mowing, Seeding, etc.; Fireman on Boilers; Forklift Trucks; Grouting Machine; Hoists, Automatic; Hoists, All Elevators; Hoists, Tugger Single Drum; Jeep Diggers; Low Boys; Pipe Jacking Machines; Post-Hole Digger; Power Saw, Concrete Power Driven; Pug Mills; Rollers, other than asphalt; Seed and Straw Blower; Steam Generators; Stump Machine; Winch Trucks with "A" Frame; Work Boats; Tamper - Form - Motor Driven.

Class 4. Air Compressor - Small and Large; Asphalt Spreader, Backend Man; Bobcat (Skid Steer) all; Brick Forklift; Combination - Small Equipment Operator; Directional Boring Machine up to 12"; Generators; Heaters, Mechanical; Hydraulic Power Unit (Pile Driving, Extracting, or Drilling); Hydro-Blaster; Light Plants, All (1 through 5); Pumps, over 3" (1 to 3 not to exceed a total of 300 ft.); Pumps, Well Points; Tractaire; Trencher 12" and under; Welding Machines (2 through 5); Winches, 4 Small Electric Drill Winches.

Class 5. Oilers and Directional Boring Machine Locator.

Class 6. Field Mechanics and Field Welders

Class 7. Gradall and machines of like nature.

#### OPERATING ENGINEERS - BUILDING (West)

Class 1. Shovel; Concrete Spreader; Dipper Dredge Operator; Dipper Dredge Crane man; Dual Purpose Truck (boom, Boom, Winch, etc.); Mechanic-Welder; Pile Driver; Boom Tractor or Side Boom; Trenching Machine (40 H.P. and over); Building Hoist (1, 2 or 3 drums); Cleaning and Priming Machine; Backfiller (throw bucket); Locomotive Engineer; Concrete Paver; Slip Form Paver; Caisson Augering Machines; Mucking Machine; Asphalt Heater-Planer Unit; Laser Screed; Pug Mill; Concrete Conveyor or Pump; Mechanical loaded Log Chippers or similar machines; Group Equipment Greaser; Off-Road Haul Units; Pipe Bending; Automatic Curbing Machines; Blastholer; Self-Propelled Rotary Drill or similar machines; Work Boat; Combination Concrete Finishing Machine and Float; Asphalt Paver Screed Operator; Forklift (6,000 lb. cap. or over or working heights 28 ft. and above); Chip Spreader; Straddle Carrier; Asphalt Paver; Asphalt Plant Operator; Boring Machine (Directional, Vertical, or Horizontal); Central Redi-Mix Plant Operator; Combination Backhoe Front End loader; Concrete Breaker or Hydro-Hammer (excluding walk-behinds); Concrete Wheel Saw (Large self-propelled - excluding walk-behinds); Crusher (Stone, Concrete, Asphalt, etc.); Curing-Tinning Machine; Excavator; Farm-type Tractor Operating Scoop or Scraper or with Power Attachment; Grader; Motor Grader; Motor Patrol; Auto Grader; Form Grader; Pull Grader; Sub Grader; Elevating Grader; Guard Rail Post Driver; Hoists; Hydraulic Dredge Leverman or Engineer; Hydro-Vac truck mounted or pull type (excluding hose work), and similar equipment; Loader (Track, Rubber Tire, or Articulated); Milling Machine (excluding walk-behinds); Road Widener-Shoulder Spreader; Scraper (Self-Propelled); Self-Propelled Roller or Tire Roller (on asphalt or Blacktop); Sheep Foot or Pad Foot Compactor (excluding walk-behinds); Steel Track-Type Tractor (Dozer, Push Cat, etc.); Transfer or Shuttle Buggy (excluding motorized wheel barrows and Georgia buggies).

Class 2. Asphalt Booster; Fireman and Pump Operator at Asphalt Plant; Mud Jack; Distributor; Self-propelled Roller (other than provided for in Class 1); Pump Operator (more than one well-point pump); Trench Machine (under 40 H.P.); Forklift (less than 6,000 lb. cap. or working heights below 28 ft.); Gypsum Pump; Conveyor over 20 H.P.; Light Plant; Boiler (Engineer or Fireman); Mechanical Broom; Driver on Truck Crane or similar machines; Elevator (Permanent inside or Temporary outside); Farm-Type Tractor (without Power Attachment); Grout Pump (excluding hose work).

Class 3. Skid Loader; Oiler; Mechanic's Helper; Mechanical Heater (other than steam boiler); Small Outboard Motor Boat (Safety Boat and Life Boat); Engine Driven Welding Machine; Water Pumps; Air Compressor (400 c.f.m. or over); Deck Engineers.

Class 4. Leadman - Mechanic or Equipment Greaser.

Class 5. Track Excavator with Bucket (4 cubic yard and up to but not including 6 cubic yard).

Class 6. Track Excavator with Bucket (6 cubic yard and over).

Class 7. Crane (Friction or Hydraulic, regardless of size or attachments); Tow or Push Boat.

#### OPERATING ENGINEERS- HIGHWAY (West)



Class 1. Shovel; Concrete Spreader; Dipper Dredge Operator; Dipper Dredge Crane man; Dual Purpose Truck (Boom, Winch, etc.); Mechanic-Welder; Pile Driver; Boom Tractor or Side Boom; Building Hoist (1, 2 or 3 drums); Cleaning and Priming Machine; Backfiller (throw bucket); Locomotive Engineer; Concrete Paver; Slip Form Paver; Caisson Augering Machines; Mucking Machine; Asphalt Heater Planer Unit; Laser Screed; Pug Mill; Concrete Conveyor or Pump (excluding truck-mounted); Mechanical loaded Log Chippers or similar machines; Group Equipment Greaser; off-road haul units; Pipe Bending; Automatic Curbing Machines; Blastholer; Self-propelled Rotary Drill or similar machines; Work Boat; Combination Concrete Finishing Machine and Float; Asphalt Paver Screed Operator; Forklift (6,000 lb. cap. or over or working heights above 28 ft.); Chip Spreader; Asphalt Paver; Asphalt Plant Operator; Boring Machine (Directional, Vertical, or Horizontal); Central Redi-Mix Plant Operator; Combination Backhoe Front End loader; Concrete Breaker or Hydro-Hammer (excluding walk-behinds); Concrete Wheel Saw (Large self-propelled - excluding walk-behinds); Crusher (Stone, Concrete, Asphalt, etc.); Curing-Tinning Machine; Excavator; Farm-Type Tractor Operating Scoop or Scraper with Power Attachment; Grader; Motor Grader; Motor Patrol; Auto Grader; Form Grader; Pull Grader; Sub Grader; Elevating Grader; Guard Rail Post Driver; Hoists; Hydraulic Dredge Leverman or Engineer; Hydro-Vac truck mounted or pull type, and similar equipment; Loader (Track, Rubber Tire, or Articulated); Milling Machine (excluding walk-behinds); Road Widener-Shoulder Spreader; Scraper (self-propelled); Self-propelled Roller or Tire Roller (on asphalt or Blacktop); Sheep Foot or Pad Foot Compactor (excluding walk-behinds); Steel Track-Type Tractor (Dozer, Push Cat, etc.); Transfer or Shuttle Buggy (excluding motorized wheel barrows and Georgia buggies); Trenching Machine (40 H.P. and over).

Class 2. Asphalt Booster; Fireman and Pump Operator at Asphalt Plant; Mud Jack; Farm-Type Tractor without Power attachment; Distributor; Straddle Carrier; Self-propelled Roller or Compactor (other than provided for in Class 1); Pump Operator (more than one well-point pump); Trench Machine (under 40 H.P.); Forklift (less than 6,000 lb. capacity or working heights below 28 ft.); Conveyor over 20 H.P.; Air Compressor (400 c.f.m. or over); Light Plant; Boiler (Engineer or Fireman); Mechanical Broom; Driver on Truck Crane or similar machines; Elevator (Permanent inside or Temporary outside); Grout Pump (excluding hose work).

Class 3. Oiler; Mechanic's Helper; Mechanical Heater (other than steam boiler); Small Outboard Motor Boat (Safety Boat and Life Boat); Engine Driven Welding Machine; skid steer.

Class 4. Leadman - Mechanic or Equipment Greaser.

Class 5. Track Excavator with Bucket (4 cubic yard and up to but not including 6 cubic yard).

Class 6. Track Excavator with Bucket (6 cubic yard and over).

Class 7. Truck mounted Concrete Conveyor or Pumps Extending to 90 ft. or more.

Class 8. Crane (Friction or Hydraulic, regardless of size or attachments); Tow or Push Boat.

TRUCK DRIVER - BUILDING, HEAVY AND HIGHWAY CONSTRUCTION Class 1. Drivers on 2 axle trucks hauling less than 9 ton. Air compressor and welding machines and brooms, including those pulled by separate units, truck driver helpers, warehouse employees, mechanic helpers, greasers and tiremen, pickup trucks when hauling materials, tools, or workers to and from and on-the-job site, and fork lifts up to 6,000 lb. capacity.

Class 2. Two or three axle trucks hauling more than 9 ton but hauling less than 16 ton. A-frame winch trucks, hydrolift trucks, vector trucks or similar equipment when used for transportation purposes. Fork lifts over 6,000 lb. capacity, winch trucks, four axle combination units, and ticket writers.

Class 3. Two, three or four axle trucks hauling 16 ton or more. Drivers on water pulls, articulated dump trucks, mechanics and working forepersons, and dispatchers. Five axle or more combination units.

Class 4. Low Boy and Oil Distributors.

Class 5. Drivers who require special protective clothing while employed on hazardous waste work.

## TRUCK DRIVER - OIL AND CHIP RESEALING ONLY.

This shall encompass laborers, workers and mechanics who drive contractor or subcontractor owned, leased, or hired pickup, dump, service, or oil distributor trucks. The work includes transporting materials and equipment (including but not limited to, oils, aggregate supplies, parts, machinery and tools) to or from the job site; distributing oil or liquid asphalt and aggregate; stock piling material when in connection with the actual oil and chip contract. The Truck Driver (Oil & Chip Resealing) wage classification does not include supplier delivered materials.

### Other Classifications of Work:

For definitions of classifications not otherwise set out, the Department generally has on file such definitions which are available. If a task to be performed is not subject to one of the classifications of pay set out, the Department will upon being contacted state which neighboring county has such a classification and provide such rate, such rate being deemed to exist by reference in this document. If no neighboring county rate applies to the task, the Department shall undertake a special determination, such special determination being then deemed to have existed under this determination. If a project requires these, or any classification not listed, please contact IDOL at 217-782-1710 for wage rates or clarifications.

## LANDSCAPING

Landscaping work falls under the existing classifications for laborer, operating engineer and truck driver. The work performed by landscape plantsman and landscape laborer is covered by the existing classification of laborer. The work performed by landscape operators (regardless of equipment used or its size) is covered by the classifications of operating engineer. The work performed by landscape truck drivers (regardless of size of truck driven) is covered by the classifications of truck driver.

# ODELL PUBLIC LIBRARY

PROJECT: REPAIR ROOF

G-001

COVER SHEET

REPAIR LIBRARY ROOF

DESIGNED BY: DATE: SOLICITATION NO.  
DWN BY: COD BY: PROJECT NO. DRAWING NO.  
SUBMITTED BY:

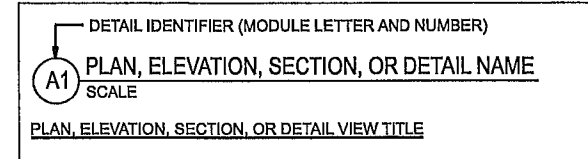
MARK DESCRIPTION

DATE APPL

**ARCHITECTURAL ABBREVIATIONS**

AFF	ABOVE FINISHED FLOOR	FIN	FINISH	OVHD	OVERHEAD
ACC DR	ACCESS DOOR / PANEL	FP	FLAT PAINT	PDU	POWER DISTRIBUTION UNIT
ADAAG	AMERICAN WITH DISABILITIES ACCESSIBILITY GUIDELINES	FF	FINISHED FLOOR	PT	PAINT OR PRESSURE TREATED
ACCESS	ACCESSORIES	FLR	FLOOR	PR	PAPER
ADJ	ADJUST / ADJUSTABLE	FD	FLOOR DRAIN	PNL	PANEL
ACOUST.	ACOUSTICAL	FLUOR	FLUORESCENT	PART	PARTITION
AB	ANCHOR BOLT	FTG	FOOTING	PLAS	PLASTER OR PLASTIC
ANOD	ANODIZED	FDN	FOUNDATION	PLT	PLATE
AC	AIR CONDITIONING	FV	FIELD VERIFY	PLYWD	PLYWOOD
AL / ALUM	ALUMINUM	GA	GAGE OR GAUGE	PBS	POUNDS
&	AND	GALV	GALVANIZED	PBSF	POUNDS / SQUARE FOOT
L	ANGLE	GBF	GYP BOARD FURRING	PMJF	POUNDS / SQUARE INCH
APP	APPROVED	GFCI	GOVERNMENT FURNISHED CONTRACTOR INSTALLED	PRE-FAB	PRE-FABRICATED
APPROX	APPROXIMATE	GFGI	GOVERNMENT FURNISHED GOVERNMENT INSTALLED	QT	QUARRY TILE
ARCH	ARCHITECTURAL	GP	GLASS	REF	REFERENCE
@	AT	GL	GLASS	REINF	REINFORCEMENT
ATFP	ANTI TERRORISM / FORCE PROTECTION AVERAGE	GOVT	GOVERNMENT	REQD	REQUIRED
AVG	AVERAGE	GYP	GYP SUM	REV	REVISIONS / REVISED
AWI	ARCHITECTURAL WOODWORK INSTITUTE	GYP BD (GWB)	GYP SUM BOARD	RD	ROOF DRAIN
BHMA	BUILDERS HARDWARE MANUFACTURERS ASSOCIATION, INC.	HKS	HOOKS	RH	RIGHT HAND
BM	BEAM	HR	HANDRAIL	RHR	RIGHT HAND REVERSE
BLKG	BLOCKING	HDW	HARDWARE	RM	ROOM
BD	BOARD	HGT	HEIGHT	RO	ROUGH OPENING
BTM	BOTTOM	H	HIGH	RB	RUBBER BASE
BLDG	BUILDING	HP	HIGH POINT	SC	SEALED CONCRETE
CFCI	CONTRACTOR FURNISHED CONTRACTOR INSTALLED	HM	HOLLOW METAL	SCW	SOLID CORE WOOD
CH	CHANNEL	HRIZ	HORIZONTAL	SCHED	SCHEDULE
CPT	CARPET	HB	HOSE BIBS	SECT	SECTION
CLG	CEILING	HVAC	HEATING VENTILATION & AIR CONDITIONING	SGP	SEMI-GLOSS PAINT
CLG HT	CEILING HEIGHT	IN	INCH	SHT MET	SHEET METAL
CTR	CENTER	IN	INCH	SIM	SIMILAR
C	CENTER LINE	INSUL	INSULATION	STC	SOUND TRANSMISSION CLASS
C TO C	CENTER TO CENTER	INT	INTERIOR	SPEC(S)	SPECIFICATION
CT	CERAMIC TILE	IRC	INTERNATIONAL RESIDENTIAL CODE	SFRM	SPRAYED FIRE RESISTIVE MATERIAL
CLR	CLEAR	JT	JOINT	SQ	SQUARE
CO	CLEANOUT	KP	KICK PLATE	ST	STAIN
CLOS	CLOSET	LAM	LAMINATE	SS	STAINLESS STEEL
CO	COMPANY	LDG	LANDING	STD	STANDARD
COL	COLUMN	LAV	LAVATORY	STL	STEEL
CONC	CONCRETE	LH	LEFT HAND	STOR	STORAGE
COOR	CORRIDOR	LHR	LEFT HAND REVERSE	STRUCT	STRUCTURAL
COOR	CONTRACTING OFFICER'S REPRESENTATIVE	LT	LIGHT	SUSP	SUSPENDED
CMU	CONCRETE MASONRY UNIT	LTG	LIGHTING	TOIL / TLT	TOILET
CONST	CONSTRUCTION	LONG	LONGITUDINAL	TEL	TELEPHONE
CONT	CONTINUOUS	LVR	LOUVER	THK	THICK
CONTR	CONTRACTOR	LP	LOW POINT	THOLD	THRESHOLD
CJ	CONTROL JOINT	MAS	MASONRY	TG	TEMPERED GLASS
CY	CUBIC YARD	MO	MASONRY OPENING	TJ	TOP OF
DET	DETAIL	MGR	MANAGER	TOB	TOP OF BEAM
DIA	DIAMETER	MANUF	MANUFACTURER	TOC	TOP OF CONCRETE
DIM	DIMENSION	MATL	MATERIAL	T/C	TOP OF CURB
DISP	DISPENSER	MECH	MECHANICAL	TOW	TOP OF STEEL
DR	DOOR	MTL	METAL WALL PANEL	TW	TOP OF WALL
DN	DOWN	MISC	MISCELLANEOUS	TU	TOUCH-UP
DS	DOWNSPOUT	NIC	NOT IN CONTRACT	TYP	TYPICAL
DESC	DESCRIPTION	NO (#)	NUMBER	UFC	UNIFIED FACILITIES CRITERIA
DWG	DRAWING	NTS	NOT TO SCALE	UL	UNDERWRITERS LABORATORIES
EA	EACH	NFPA	NATIONAL FIRE PROTECTION ASSOCIATION	UNO	UNLESS NOTED OTHERWISE
ELEC	ELECTRICAL OR ELECTRIC	OC	OWNER FURNISHED	VERT	VERTICAL
EL	ELEVATION	OFBI	OWNER FURNISHED CONTRACTOR INSTALLED	VEST	VESTIBULE
ERD	EMERGENCY ROOF DRAIN	OH	OPPOSITE HAND	VCT	VINYL COMPOSITION TILE
EP	EPOXY PAINT	OPNG	OPENING	VCL	VINYL COVE BASE
ENGR	ENGINEER	OW	OPEN WEB	VTR	VENT THRU ROOF
EQUIP	EQUIPMENT	OPP	OPPOSITE	W	WIDTH
EQ	EQUAL	OD	OUTSIDE DIAMETER	W/	WITH
EXIST	EXISTING	OSHA	OCCUPATIONAL SAFETY AND HEALTH ACT	WC	WATER CLOSET
EXP	EXPANSION / EXPOSED			WCO	WALL CLEAN OUT
EJ (EXP JT)	EXPANSION JOINT			WD	WOOD
EXP TO STRUCT	EXPOSED TO STRUCTURE			WDW	WINDOW
EXT	EXTERIOR			W/O	WITHOUT
ETD	ESTIMATED TRAVEL DISTANCE			WRGB	WATER RESISTANT GYPSUM BOARD
FAC	FACTORY			WS	WEATHERSTRIPPING
FDC	FIRE DEPARTMENT CONNECTION			WRO	WINDOW ROUGH OPENING
FT	FEET			YD	YARD
FE	FIRE EXTINGUISHER				

**VIEW TITLES:**



**SYMBOLS:**



NORTH ARROW

KEYNOTE TAG

**GENERAL NOTES**

- NOTES FOUND ON G-SHEETS, ARE GENERAL NOTES AND APPLY TO THE ENTIRE PROJECT TO INCLUDE THE COMPLETE PLAN SET AND SPECIFICATIONS, UNLESS NOTED OTHERWISE. SHEET NOTES APPLY TO ALL PLANS, ELEVATIONS, SECTIONS, AND DETAILS FOR THAT SHEET, UNLESS NOTED OTHERWISE. KEYNOTES APPLY TO ELEMENTS ON THE SHEET AS INDICATED, UNLESS NOTED OTHERWISE.
- THE DRAWINGS INDICATE THE GENERAL EXTENT OF WORK. THE DRAWINGS ARE NOT INTENDED TO INDICATE OR DESCRIBE ALL WORK REQUIRED FOR THE FULL PERFORMANCE AND COMPLETION OF THE REQUIREMENTS OF THE CONTRACT DOCUMENTS.
- THE ENUMERATION OF PARTICULAR ITEMS OF WORK IN ONE PORTION OF THE CONTRACT DOCUMENTS SHALL NOT BE CONSTRUED TO EXCLUDE OTHER ITEMS NECESSARY OR IMPLIED THEREFROM.
- THE CONTRACTOR IS RESPONSIBLE FOR THE COORDINATION OF ALL PARTS OF THE WORK SO THAT NO WORK SHALL BE LEFT IN AN UNFINISHED OR INCOMPLETE CONDITION. THE CONTRACTOR SHALL PROVIDE A COMPLETE AND USABLE PRODUCT.
- THE CONTRACTOR SHALL PROTECT ANY EXISTING, IN-PLACE, AND/OR NEW WORK.
- ALL WORK NOTED "N.I.C." IS NOT MEANT TO BE PART OF THE CONSTRUCTION SCOPE OF WORK AGREEMENT.
- THE CONTRACTOR SHALL PAY FOR AND COORDINATE THE REMOVAL AND LEGAL DISPOSAL OF MATERIALS AND RUBBISH.
- THE CONTRACTOR SHALL FIELD VERIFY ALL DIMENSIONS. DIMENSIONS AND PLANS ARE NOT WARRANTED AS ACCURATE. VERIFY EXISTING CONDITIONS THAT MAY AFFECT THE WORK PRIOR TO BID.
- DO NOT SCALE DRAWINGS; LARGE SCALE DETAILS GOVERN OVER SMALL SCALE DETAILS.
- NFPA 241, STANDARD FOR SAFEGUARDING CONSTRUCTION, AND ALTERATION OPERATIONS SHALL BE APPLIED.
- PROVIDE THE MINIMUM EXPANSION, CONTRACTION, AND CONTROL JOINTS IN ALL WORK PER THE PRODUCT MANUFACTURER'S STANDARDS OR THE APPLICABLE INDUSTRY STANDARDS.
- ALL DISSIMILAR METALS SHALL BE ISOLATED FROM EACH OTHER TO AVOID GALVANIC CORROSION.
- DO NOT CUT INTO, REMOVE, OR ALTER ANY STRUCTURAL MEMBER OR FLOOR SYSTEM UNLESS IT IS SPECIFICALLY NOTED OR SHOWN ON DRAWINGS.
- THE CONTRACTOR SHALL PLAN THEIR WORK TO PROVIDE ADEQUATE PROTECTION FOR PERSONS AND PROPERTY AT ALL TIMES, AND EXECUTE THE WORK IN SUCH A MANNER TO AVOID ANY HAZARD TO PERSONS AND PROPERTY AS NECESSARY.
- ALL PRODUCTS LISTED ON DRAWINGS AND NOT INDICATED IN SPECIFICATIONS SHALL BE SUBMITTED FOR APPROVAL.
- DEMOLITION OR NEW WORK MAY NOT BE SOLELY INDICATED ON THEIR CORRESPONDING SHEETS.
- THE CONTRACTOR SHALL REQUEST PARKING, JOB TRAILER, STAGING AND OTHER NECESSARY SPACES.
- DISPOSE OF DEMOLISHED AND WASTE MATERIALS OFF SITE UNLESS OTHERWISE NOTED.
- TO PERFORM THE WORK AS AWARDED BY THE BASE BID, OPTION, OR CONTRACT MODIFICATION, THE CONTRACTOR SHALL EITHER PROTECT OR RELOCATE ADJACENT ITEMS, EQUIPMENT, AND STRUCTURES AS NECESSARY TO FACILITATE THE WORK.
- WORK REQUIRING POWER REMOVAL SHALL BE DONE IN A TIMELY MANNER AND OUTSIDE NORMAL WORKING HOURS. IF SAFE WORKING CONDITIONS EXIST FOR BOTH THE CONTRACTOR AND BUILDING OCCUPANTS, THEN POWER SHALL BE RESTORED FOR BUILDING OCCUPANTS DURING NORMAL WORKING HOURS. THE CONTRACTOR SHALL IMMEDIATELY RESTORE POWER ONCE WORK IS COMPLETE AND SAFE CONDITIONS EXIST.
- THE CONTRACTOR SHALL OBTAIN NECESSARY BUILDING AND FIRE PERMITS FROM THE AUTHORITIES HAVING JURISDICTION.
- THE CONTRACTOR SHALL PERFORM WORK IN ACCORDANCE WITH APPLICABLE CODES, ORDINANCES, AND REGULATORY AGENCIES.
- NOTES APPEAR ON VARIOUS SHEETS FOR DIFFERENT SYSTEMS AND MATERIALS. SHEETS ARE TO BE REVIEWED AND NOTES ON INDIVIDUAL SHEETS SHALL BE APPLIED TO RELATED DRAWINGS AND DETAILS.
- ALL MECHANICAL, ELECTRICAL AND PLUMBING WORK THAT PENETRATES FLOORS, WALLS, OR ROOFING SHALL BE INSTALLED IN A MANNER THAT WILL PRESERVE THE MOISTURE RESISTIVENESS, FIRE RATING, AND STRUCTURAL INTEGRITY OF THE BUILDING.
- WORK SHALL BE DONE IN A WORKMAN LIKE MANNER. WORK SHALL CONFORM TO APPLICABLE INDUSTRY OR MANUFACTURER'S PUBLISHED STANDARDS FOR QUALITY OF MATERIALS AND WORKMANSHIP, AS WELL AS THE REQUIREMENTS IN THESE DRAWINGS AND SPECIFICATIONS. ANY CONFLICTING REQUIREMENTS OF THE SOURCES LISTED ABOVE SHALL BE BROUGHT TO THE ATTENTION OF THE LIBRARY PRIOR TO PROCEEDING WITH THE WORK.
- CONTRACTOR SHALL STOP WORK IMMEDIATELY AND CONTACT THE LIBRARY IF ANY SUSPECTED HAZARDOUS MATERIAL IS DISCOVERED DURING CONSTRUCTION. HANDLE AND DISPOSE OF HAZARDOUS MATERIALS IN ACCORDANCE WITH APPLICABLE FEDERAL, STATE AND LOCAL LAWS.

APPL.	
DATE	
MARK	
DESCRIPTION	
DESIGNED BY:	
DWN BY:	
SUBMITTED BY:	
PROJECT NO.	
DATE:	
SOLICITATION NO.	
DRAWING NO.	
REPAIR LIBRARY ROOF	
ABBREVIATIONS, SYMBOLS, AND GENERAL SHEET NOTES	
G-002	



